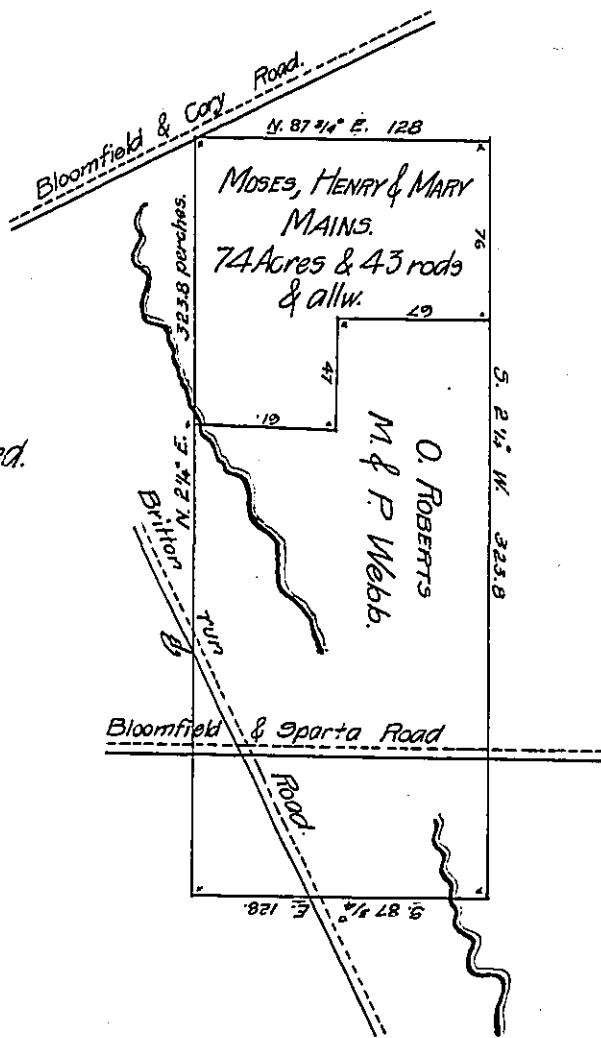


Course - - Dis.
 Begin. at N.W. corner
 a post in the Bloomfield & Cory road.

N. 87 3/4° E. 128. per.
 S. 2 1/4° W. 323.8
 S. 87 3/4° W. 128.
 N. 2 1/4° E. 323.8



In pursuance of the actual Settlement and improvement of Moses Mains, Henry Mains, Mary Mains, O. Roberts, M. Webb & Philo Webb. Was Surveyed June 1st 1870, the annexed tract of land containing 244 acres 45 perches & allowance of six pct. for roads. Situate in Sparta township Crawford Co. Pa.

Tho^s. Van Horne, Co. Sur.

IN TESTIMONY that the above is a copy of the original remaining on file in the Department of Internal Affairs of Pennsylvania, made conformably to an Act of Assembly approved the 16th day of February 1833, I have hereunto set my hand and caused the Seal of said Department to be affixed at Harrisburg, this 13th day of September 1907.

Henry Gould
 Secretary of Internal Affairs.